



CURLY CUES

President's Message

Spring 2025

Dear Curly Members,

We at ABC Registry wish to extend our heartiest THANKS to Caren Schumann for all her hard work and dedication to this Registry. She managed the website and the Database with glee, and we are grateful for all her help the last couple of years. Her new job will take up all her time and we wish her well in the new endeavor.

I will be the new Webmaster and the Editor of the Curly Cues. Please send any updates or pictures or stories you wish to see published to my email: jo_curlies@hotmail.com

I want to warn everyone that if I do not get much response, I will be pushing my ranch and horse photos and stories along with For Sale ads! Please send photos of your Breeding Stallions along with a nice description and history. I will post your stories in the CC's and Angie can post on Facebook for the Registry. Let's do some promotion of this wonderful breed!!

I plan on attending my Curly mares foaling nights this year. I have never seen one of my babies born, close but usually 20 minutes late. We set up a foaling camera over the stall and I would spend that whole night waking up every 15 minutes and checking the camera online. This year I am planning on being on the scene, I don't want to miss it! We are having a trotting Curly and a Foxtrotting Curly. I am so excited, I can't wait till May!!

Good Luck to all the members, and hope all your Foals are Curly!!

Joan Olson

ABC President

INSIDE THIS ISSUE

ARTICLES

President's Message Page 1

Curly Spotlight Page 2

Spring Fever Page 3

Historical Curly Pics Page 4

Color Genetics Page 5

Genetic Typing Page 6

Breed Standards Page 7

Database Page 8

New Registrations Page 9

Breeders Page 13

Board Members Page 19



AMERICAN BASHKIR CURLY REGISTRY P.O. Box 1476 Florence, Kentucky USA
41022-1476 PHONE 859-250-4364 FAX 775-475-0103 We make no representations or warranties of any kind, express or implied, about the completeness, accuracy, reliability, suitability for any purpose or availability with respect to the information, products, services, or related graphics contained herein. The ABC Registry assumes no responsibility for statements contained in submissions contributed by other organizations or authors, nor does the publishing of such material imply approval by the ABC Registry. In no event will the ABC Registry be liable for any losses or damages including, without limitation, indirect or consequential losses or damages arising out of, or in connection with, the use of any content in this newsletter. Links to other sites are not part of the ABC Registry's content and are provided only as an aid. Linked sites are not under the control of the ABC Registry with regard to their nature, content and availability. The ABC Registry does not own any intellectual property rights to the material on linked sites, nor does it warrant the accuracy of information therein, nor does it imply a recommendation or endorsement of the views expressed therein. Use of any material, either in whole or in part contained in this issue requires the prior written consent of the ABC Registry.



CURLY CUES

CURLY HORSE SPOTLIGHT

Black Rocks Golden Firefly fondly known as O'Sparky shared his curls at the 43rd annual North Texas Irish Festival on March 1, 2025. O'Sparky is a registered Curly Mustang Stallion with ABCR. His partner, Breeann Willich, showed O'Sparky's smooth gait while owner Angie Gaines with Golden Curls Ranch gave a history of curly herd's gathered in Black Rick Hills near Winnemucca, NV by BLM in 2009





CURLY CUES

SPRING FEVER

HD SOLEN'S ELINOR owned by Joan Olson



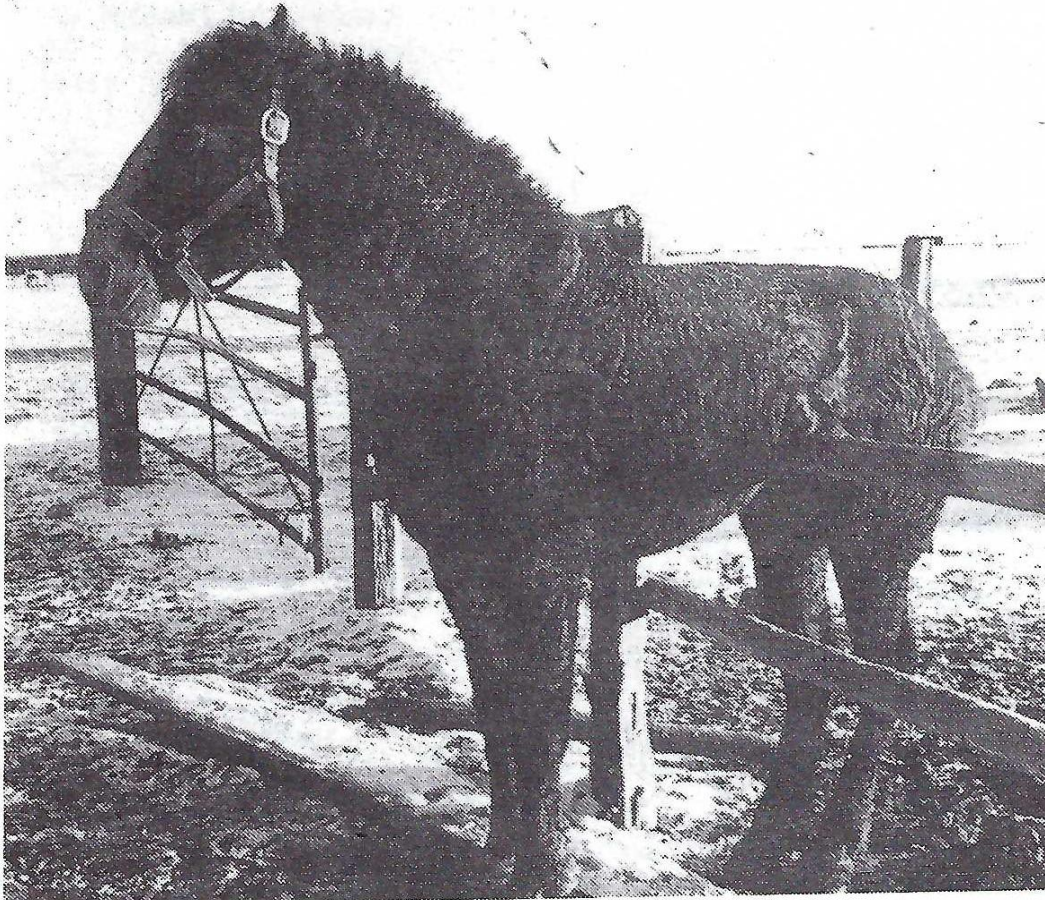
MY AMIGO Owned by Melinda Martino





CURLY CUES

Historical Curly Pictures



"I CAN'T BELIEVE I DID THIS!" -- Photo of ND JOKER II ABC-944, owned by Jim Schlueter of Bend OR, and 2nd place winner in our 1990 Photo Contest. Your Editor really cracked up after receiving this second picture just a week after the one on page 7. Unbelievable to receive two almost identical photos in the same contest. Don't you just LUV them?



CURLY CUES

COLOR GENETICS

By Diane Mitchell

There are 3 base colors: black, bay, and chestnut.

Black=has black eyes, hooves and skin. Black points.

Bay=mixture of red and brown (yellow) with black points (agouti gene).

Chestnut/sorrel-Basically red.

White is actually not a color, but an absence of color. So, a white horse has snow-white hair, pink skin, and brown eyes.

Brown is not a base color, but a darker version of chestnut. However, some brown horses are so dark, they are considered black.

A dilution gene makes changes (lightness) in color or pattern of the base color.

Add a crème gene and the color becomes lighter. E.G.:

Black + 1 crème gene = Smokey black, + 2 crème genes = Grullo

Bay + 1 crème gene = Buckskin, + 2 crème genes = Perlino

Chestnut + 1 crème gene = Palomino, + 2 crème genes = Cremello

Agouti is a gene that pushes black points to the outside, thus creating black legs, mane tail and black points on the ears. A black with an Agouti gene can appear more like a Bay.

Gray is another dilution factor and is always dominant. The horse may be born a base color but turns gray over time. If they have 2 gray genes they will turn gray quicker than those with 1 gray gene. A dapple gray is a gray that hasn't finished graying out yet.

Dun is a dilution factor, shown by a definite dorsal strip from end of mane to tail. The Dun may have 'zebra stripes' on the legs, black mane and tail. But it MUST have the dorsal stripe. If it doesn't have the dorsal stripe, it's not a Dun. A Bay with the Dun gene can look light like a Buckskin, but again, has the dorsal strip. A Sorrel with the Dun gene is called a Red Dun.

The Appaloosa pattern is a Dominant pattern.



CURLY CUES

Genetic Typing

By Mary Worley 3rd year A&M vet student

Each DNA strand of genes is made up of an outer “rib” and 4 different bases: T, C, A, G.

DNA is double-stranded, doesn’t change within the individual. RNA is single-stranded and can change.

What you see (traits) is dependent on how they match up.

A gene is 1 chunk of DNA for a specific trait. There are 2 alleles in each gene. *Homo* means they are the same type. *Hetero* means they are different. *Dominant* means they are expressed (seen). *Recessive* means they are hidden. *Codominance* means both alleles are dominant and expressed. *Dominance Variance* influences the dominant trait. *Epistatic Variance* has more influence on the dominant trait.





CURLY CUES

ABCR CURLY HORSE BREED STANDARDS

Body Conformation

- A medium size head with well-defined jaw and throatlatch
- Wide set eyes with eyelashes that curl up
- Ears that are short to medium in length with curls inside (ear hair does not totally shed out in the summer)
- A medium length neck, deep at the base of the neck where it joins the base of the shoulder
- Noticeably short back, deep through the girth
- An appearance of a long under line and the belly cut high in the flank
- Heavy boned legs and short cannon bone as compared to the forearm
- Medium withers and a flat croup with a shallow slope to the base of the tail

Curly Characteristics

- Body (Fine, soft hair)
- Ringlet (can be several inches long)
- Marcel Wave (deep soft wave in the body coat)
- Crushed Velvet (soft dense pile of curls in body coat)

Mane (Extra fine hair)

- Kinky –preferable
- Wavy
- Should shed all or partial in the summer
- Split mane (hangs on both sides of neck)

Tail

- Ringlets
- Wavy
- Should shed partial at the head of the tail in the summer of some horses may shed tail completely

Fetlocks

- Curly –preferable
- Wavy
- Should shed in summer but still retain some long hairs

Hooves

- Almost perfectly round in shape
- Very hard and dense
- Proportioned to the size of the horse

Size and Weight

- Average-15 hands
- Average weight-800 to 1000 pounds

Unique Characteristics

- Curly coat can be hypoallergenic (the horsehair is round instead of flat and testing has shown the hair is closely related to mohair)
- Can completely shed the mane and/or tail in the summer, only to grow back in the fall with the winter coat.
- Noticeably short, strong back, sometimes indicating five lumbar vertebrae
- Even-tempered disposition
- Quick pulse and respiration recovery
- Very dense bone in the legs



CURLY CUES

ABCR CURLY HORSE DATABASE

“FREE TO ABCR MEMBERS”

ABCR provides a fully linked ABCR Curly Horse Studbook ONLINE with more than 8,100 entries and 2,950 pictures including all ABCR horses. These are the features of this database:

1. Fully linked PEDIGREES WITH PICTURES
2. SIBLINGS VIEW: Find full and half siblings of a given ABCR animal at-a-glance
3. OFFSPRING VIEW
4. VERTICAL PEDIGREES: Vertical pedigrees list full siblings of each horse in the pedigree at-a-glance, which as a group represent various combinations of their parents' genes, and are good indicators of the range of possibilities that are likely to be passed on. Using vertical pedigree analysis gives breeders interesting insights e.g. about confirmation or the extreme characteristics that cannot be tracked in a direct manner.
5. REVERSE PEDIGREES: Reverse pedigrees show offspring of the offspring of a given animal.
6. TRIAL MATING: Try out mating's between ABCR horses and look how the confirmation or other characteristics would match.
7. Additional information such as COEFFICIENT OF INBREEDING (COI) and PEDIGREE QUALITY
8. Indication of DNA AVAILABILITY and EXTREME CHARACTERISTICS
9. NAME GENERATOR: Generator for horse names based on more than 40 years of ABCR Curly Horse names-always new and fancy combinations, fun guaranteed!
10. ADDITIONAL FEATURES: Advanced Search, Fully scalable between 3 and 8 generations, same ancestors highlighted, enlargeable pictures



CURLY CUES

NEW REGISTRATIONS Full Curly Registry Book



ABC# Junby's Woodwalker

Congratulations

Alice Stollenwerk

Germany

ABC# 4214 Y.S. Kaiyobo

Congratulations

Ann Broom

Canada





CURLY CUES

NEW REGISTRATIONS

Outcross Book



0108 HIDDEN CAVE NOAH

Congratulations

Derrick Embry

Morgantown, Kentucky



0109 HD Pride's Veronika

Congratulations

High Desert Equine Center

Reno, Nevada



CURLY CUES

NEW REGISTRATIONS

CURLY BOOK



CB 41 SANDIE

Congratulations

Elena Warner

Orville, California



CB 41 HAYMAKERS TEETER

Congratulations

Erin and Ben Schroeder

Wynot, Nebraska



CURLY CUES

NEW REGISTRATIONS

MUSTANG BOOK



M 16 FC CURLIE FRIES FREYA
M 17 FC EUREKA MIRACLE AND STARS
Congratulations

Ann Pinten

La Valle Wisconsin





CURLY CUES

BREEDERS

DISTRICT 1

#338 Joan Olson

HIGH DESERT EQUINE CENTER

5555 Wilcox Ranch Rd, Reno, Nevada 89510

PH: 775-475-2250 E-Mail: ilovecurlies@hotmail.com

Website: <http://www.hdequine.com>

Stallions: HD LAKOTA'S LEGACY, ABC# 4321

MAXIMUM'S PRIDE, ABC# 3650

STAG CREEK SOLEN ABC# 4075

District 2

Currently No Breeder

District 3

#317 Brandon & Jennifer Bennett

SUNFLOWER TRAILS LLC

147 Rocky Lane Bastrop, TX 78602

PH: 512-965-7543 E-Mail: sunflowertrails@curlypinesranch.com

Website: <http://www.curlypinesranch.com>

Stallion: SFT TRUE HEAR ABC# 3644

#370 Angela Gaines

GOLDEN CURLS RANCH

7480 CR 4095

PH: 214-794-1776

E-Mail: angie@goldencurlsranch.com

Website: <http://www.godencurlsranch.com>

Stallion: BLACK ROCK'S GOLDEN FIREFLY ABC# M1



CURLY CUES

BREEDERS

District 5

#15 Amy Wall

Stoney Acres

W5374 Highway 64

Peshtigo, WI 54157

PH: 715-789-2243 E-MAIL: wallawall@yahoo.com

DISTRICT 6

#79 Tom McNally

HARDSCRABBLE FARMS

7 Town Shed RD, Minerva, NY 12851-9713

PH: 518-251-3424 E-MAIL: curly-nut@frontiernet.net

Curlyhorselady67@yahoo.com

rubylab@barton.com

Stallions: THUNDER ROAD, ABC# 2800

WW QUARTER MOON, ABC# 2454

DISTRICT 7

#385 Marion Huurman

HIDDEN CAVE RANCH

Burkesville, KY 42717

PH: 270-433-3225 E-MAIL: marion@hiddencaveranch.com

Website: www.HCRcurlyhorses.com

Stallion:



CURLY CUES

BREEDERS

District 7 continued

#412 Sarah Lewan
HIDDEN CATTLE COVE
107 Stopping Oak Rd
Dunlap, TN 37327
E-MAIL: sarahfhcc@gmail.com

#428 Raenelle Meyer (Joiner)
14051 Noble Park Dr.
Odessa, FL
PH: 813-833-3473
Website: <https://www.facebook.com/people/Meyer-Davis-Farms/100078442680088//>

#430 Derrick Embry
EMBRY FAMILY HORSES AND TACK
1676 Logansport Rd
Morgantown, KY 42261
PH: 270-792-3453
E-MAIL: thunderbay@logantele.com



CURLY CUES

BREEDERS DISTRICT 8

#18 Sonja/Greg Oakes

OAKESMUIR CURLY HORSES

RR#5, Guelph, ONT, Canada N1H 6J2

PH: 510-846-5554 FAX: 519-846-5554

E-MAIL: bashcurl@golden.net WEBSITE: <http://curlyhorse.com>

Stallion: OAKESMUIR DUKE OF CURL, ABC# 2818

#166 Karalee Bell

WHIRLWIND FARM

4437 County Rd 12, RR#2

Lunenburg, Ontario, Canada K0C 1R0

PH: 613-346-5790 E-MAIL: bellkr@bell.net

WEBSITE: <http://www.whirlwindcurlies.com>

Stallions: JC'S JOKER, ABC# 512

DCC SANTA FE, ABC#2895

#316 Florence Martin

FLORELAKE CURLY HORSES

7830 Fourth Line, RR#2 Wallenstein, ONT, CANADA N0B 2S0

PH: 519-638-5819, FAX: 519-638-5668

E-MAIL: floralake@mwpol.ca WEBSITE: <http://www.floralakecurlyhorses.com>

Stallions: MEAD'S AISHIHIK TWIST, ABC# 3462

TO SHADOW'S BALCK DIAMOND ("OZZIE"), ABC#3641



CURLY CUES

DISTRICT 9

#192 Daniela Soehnchen

CURLY HORSES GERMANY

Poshof 2, 51688 Wipperfueth, GERMANY

PH: 0700-SOHNCHEN (76462436) or 11-49 (0) 2192 – 93 58 38 CELL: 011-49 (0) 178 76 46 24 3

E-MAIL: curly-info@t-online.de WEBSITE: <http://www.curlyhorsesgermany.de/>

Stallions: CHG SPARTA GENTLEMEN, ABC#3912

FLORALAKE AISHIHIK ONYX, ABC#3921

#279 Armi & Bertta Laaksonen

RATULAN KOTI OY / LAPIN CURLY TALLI

Ounasjoentie 5295, 99340 Raattama, Lapland, FINLAND

E-MAIL: armi@lapincurlytalli.fi WEBSITE: <http://lapincurlytalli.fi/>

[bertta@lapincurlytalli.fi/](mailto:bertta@lapincurlytalli.fi)

Stallions: TROY, ABC# 3214

SUN WALKER, ABC# 2934

#298 Shawn & Louis Tucker

THREE FEATHERS NATIVE CURLY HORSES

Cristo Rey, Cayo, Belize Central America

E-MAIL: curls@three-feathers.com WEBSITE: <https://www.three-feathers.com>

#411 CVV-Elevage D'American Curly

170 Impasse de Sarrauton, 40350 Gaas, France

PH: +33 6 50 77 27 10 WEBSITE: [https:// www.curly-cvv.fr/](https://www.curly-cvv.fr/)

#418 Nina Vainio/Winsome Curlies

Saarenkylantie 385, Muurame, 40950, Finland

PH: +35 8 442 831 223

WEBSITE: <https://hopoti.com/fi->

[fi/stable/WinsomeCurlies?fbclid=IwAR1rWkiNgc4BZLixnilx5IWT7aaFqXUZkr7PnL5GeWhbsU2u3tz04LE2COM](https://hopoti.com/fi/stable/WinsomeCurlies?fbclid=IwAR1rWkiNgc4BZLixnilx5IWT7aaFqXUZkr7PnL5GeWhbsU2u3tz04LE2COM)

#422 Gaby Trompeter

Nordstr 6, 32683 Barntrup, GERMANY

E-MAIL: gaby-trompeter@gmx.de



CURLY CUES

BOARD MEMBERS

President

Joan Olson

1560 Manzanita Lane Reno, NV 89509

PH: 920-255-0326

Fax: 775-826-7582

jo_curlies@hotmail.com

Vice-President

Angie Gaines

7480 CR 4095

Kaufman, TX 75142

PH: 214-794-1776

angie@goldencurlranch

Secretary

Donna Laroux /At Large Trustee

247 Poplar St.

Zwolle, LA 71486

PH: 219-241-3519

dlaroux@aol.com

Sue Davis/At Large Trustee

5555 Wilcox Ranch Rd Reno, NV 89510

PH: 618-670-4963

ilovecurlies@hotmail.com

Treasurer

Melinda Martino 2347 Hempfling Rd.

Morning View, KY 41063

PH: 859-356-0749

melsecurlyhorses@aol.com

Registrar

Melinda Martino

2347 Hempfling Rd. Morning View, KY 41063

PH: 859-356-0749

melsecurlyhorses@aol.com

DIST. 1: CA, NV, HI, UT, AZ

Joan Olson

1560 Manzanita Lane Reno, NV 89509

PH: 920-255-0326

jo_curlies@hotmail.com

Dist. 2: WA, OR, ID, MT, WY, CO

Krista Harvey

sassyshuman@gmail.com

Dist. 3: NM, TX, AR, LA, OK

Diane Mitchell

2677 CR 112

Caldwell, TX 77836

curlycountry@gmail.com

Dist.4: ND, SD, NE, KS, MN, IA, MO

Angie Gaines/At Large Trustee

7480 CR 4095

Kaufman, TX 75142

PH: 214-794-1776

angie@goldencurlranch.

Dist. 5: WI, MI, IL, IN, OH

Shawn Tucker

Three Feathers Native Curly Horses

curls@three-feathers.com

Dist.6: CT, DE, ME, MD, MA, NH, NJ, NY, PA, RI, VT

Marion Hurman-de-Roos

877 Thrasher Rd

Burkesville, KY 42717

PH: 270-433-3225

marion@hiddencaveranch.com

Dist.7: AL, FL, GA, KY, MS, NC, SC, TN, VA, WV

Melinda Martino

2347 Hempfling Rd

Morning View, KY 41063

PH: 859-356-0749

melsecurlyhorses@aol.com

Issue 139 SPRING 2025

www.abcregistry.org

18



CURLY CUES

BOARD MEMBERS

District 8: AK, Canada

Sonja Oakes
5816 Wellington County Road 7, Guelph, Ontario
N1H 6J2
Canada
PH: 519-822-1211

Distr. 9: Europe, Australia, Remaining Continents

Caren Schumann Germany

PH: +49 (0) 175 32 82 543

Caren.schumann@cps-online.de



CURLY CUES