



CURLY CUES

PRESIDENT'S MESSAGE

October 2020

FELLOW CURLY MEMBERS,

WELL, 2020 IS ALMOST OVER. LET'S PRAY EVERYONE MAKES IT THROUGH THIS ROUGH TIME IN OUR LIVES AND OUR COUNTRY. ALL WE CAN DO IS TO KEEP TRYING AND FORGE FORWARD WITH ALL THE RESOLVE WE CAN MUSTER. DON'T BE AFRAID TO ASK YOUR NEIGHBORS AND FRIENDS FOR HELP IF NEEDED. CARING AND COMPASSION SEEM TO BE IN ABUNDANCE RIGHT NOW, ESPECIALLY IN THE CURLY WORLD.

YOU WOULDN'T KNOW IT IS OCTOBER HERE IN RENO, IT HAS BEEN IN THE 80'S FOR AWHILE. ONLY PROBLEM IS IT DROPS DOWN TO THE LOW 40'S AT NIGHT. BUT THAT'S OKAY NOW SINCE THE SMOKE HAS ABATED AND IT IS NICE TO OPEN WINDOWS AT NIGHT TO COOL OFF. WE DO ENJOY THE WEATHER HERE, AND SO DO THE CURLIES!

THE CURLY MARES ARE ENTERING INTO THEIR LAST 4 MONTHS AND WE HAVE DISCUSSED WHAT KIND OF SUPPLEMENTS TO GIVE TO THEM FOR ENHANCEMENT OF THE FOAL GROWTH. I HAVE AN ARTICLE INSIDE THIS ISSUE EXPLAINING THE MARE'S PREGNANCY CHALLENGES AND THE NUTRITIONAL REQUIREMENTS NEEDED FOR THE FOAL. FOR ANYONE EXPECTING FOALS NEXT YEAR THIS IS A GREAT INFORMATIONAL PIECE.

I HOPE FALL FINDS ALL OF OUR MEMBERS WITH THEIR HAY SET UP FOR WINTER AND I WISH EVERYONE A HEALTHY AND SAFE THANKSGIVING.

JOAN OLSON

ABC PRESIDENT

INSIDE THIS ISSUE

ARTICLES

PRESIDENT'S MESSAGEPAGE 1
CONVENTION NEWSPAGE 2
NEW REGISTRATIONSPAGE 4
CURLY HORSE	
BREED STANDARDSPAGE 5
CURLY HORSE DATABASEPAGE 6
SENTIMENTAL JOURNEYPAGE 7
NUTRITIONAL NEEDS OF THE PREGNANT MAREPAGE 8
BREEDERSPAGE 11
BOARD MEMBERSPAGE 15

AMERICAN BASHKIR CURLY REGISTRY

P.O. BOX 1476 • FLORENCE, KENTUCKY
41022-1476 • PHONE: 859-250-4364 • FAX
775-475-0103

U.S. AND CANADA TOLL FREE 1-877-324-
0956 • OUTSIDE THE U.S. AND CANADA
859-356-0749

EMAIL: ABCREGISTRY@AOL.COM

This newsletter is published for ABC members, with an intended audience of members only. We make no representations or warranties of any kind, express or implied, about the completeness, accuracy, reliability, suitability for any purpose or availability with respect to the information, products, services, or related graphics contained herein. The ABC Registry assumes no responsibility for statements contained in submissions contributed by other organizations or authors, nor does the publishing of such material imply approval by the ABC Registry. In no event will the ABC Registry be liable for any losses or damages including, without limitation, indirect or consequential losses or damages arising out of, or in connection with, the use of any content in this newsletter. Links to other sites are not part of the ABC Registry's content and are provided only as an aid. Linked sites are not under the control of the ABC Registry with regard to their nature, content and availability. The ABC Registry does not own any intellectual property rights to the material on linked sites, nor does it warrant the accuracy of information therein, nor does it imply a recommendation or endorsement of the views expressed therein. Use of any material either in whole or in part contained in this issue requires the prior written consent of the ABC Registry.

ISSUE 23 FALL 2020

1

WWW.ABCREGISTRY.ORG



CURLY CUES

CONVENTION NEWS

OUR CONVENTION WAS UNFORTUNATELY CANCELLED DUE TO COVID 19 AND WE DECIDED TO DO A CONFERENCE CALL.

IT WAS HELD ON AUGUST 1, 2020. WE TALKED ABOUT THE DIFFERENT ITEMS ON OUR AGENDA AND DISCUSSED ON WHAT DIRECTION WE WANTED THE ABC TO BE HEADED IN THE FUTURE.

THE FULL CONFERENCE CALL MINUTES CAN BE VIEWED ON THE MEMBERS AREA OF THE WEBSITE.

IF YOU NEED THE LOGIN AND PASSWORD FOR MEMBERS PLEASE CONTACT THE ABC OFFICE AT ABCRegistry@aol.com.

NEXT YEAR'S CONVENTION WILL BE IN RENO, NEVADA HOSTED BY HIGH DESERT EQUINE CENTER.

THE TENTATIVE DATES ARE JULY 29-31, 2021.

THE MEETINGS WILL BE HELD AT HIGH DESERT WITH LOTS OF FUN ACTIVITIES PLANNED AS WELL. HOPE TO SEE EVERYONE THERE. WATCH FOR MORE INFORMATION ON THE WEBSITE, ABCRegistry.org.



CURLY CUES

ABC REGISTRY 2019 NATIONAL AWARDS

VERSATILITY GRAND CHAMPION—ELANA OAKES

VERSATILITY RESERVE—TIFFANY BEECHINOR WASHINGTON

FREQUENT RIDER GRAND CHAMPION—

ELANA OAKES WITH 209 MILES

FREQUENT RIDER RESERVE CHAMPION—

DIANE MITCHELL WITH 126 MILES

FREQUENT RIDER GRAND CHAMPION HORSE—

OAKESMUIR SPARTACURL WITH 61.5 MILES

GYMKHANNA GRAND CHAMPION— ELANA OAKES

PERFORMANCE GRAND CHAMPION—

WW PETER LAKOTA.

OWNED BY HIGH DESERT EQUINE OF RENO, NV

PERFORMANCE RESERVE CHAMPION—

STAG CREEK SOLEN.

OWNED BY HIGH DESERT EQUINE OF RENO, NV

THE WINNERS WILL RECEIVE A GIFT CARD FROM AN ON-LINE EQUESTRIAN RETAILER: WWW.CORROSHOP.COM

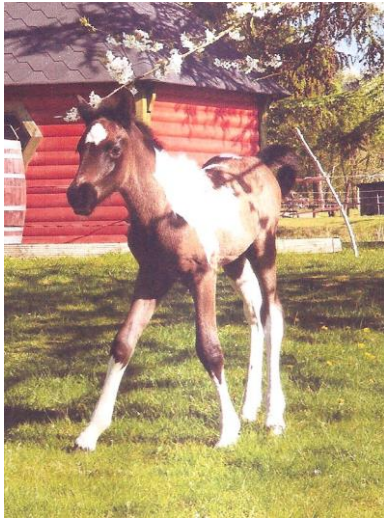
TAKE A LOOK AT THEIR WEBSITE, THERE'S A FEATURE ARTICLE ABOUT CURLIES!



CURLY CUES

NEW REGISTRATIONS

COPPER SUN RENEGAIT
OWNED BY SUSAN LAZENBY
SANTA PAULA, CA



CALOTTA VIKTUALI PFEFFERMINZA O70
OWNED AND BRED BY
CATHATINA BRANDT
GERMANY

LILITH MORNINGSTAR O71
OWNED AND BRED BY
ANTJE AVRAM
GERMANY





CURLY CUES

ABCR CURLY HORSE BREED STANDARDS

BODY CONFORMATION

- A medium size head with well-defined jaw and throatlatch
- Wide set eyes with eyelashes that curl up
- Ears that are short to medium in length with curls inside (ear hair does not totally shed out in the summer)
- A medium length neck, deep at the base of the neck where it joins the base of the shoulder
- Noticeably short back, deep through the girth
- An appearance of a long under line and the belly cut high in the flank
- Heavy boned legs and short cannon bone as compared to the forearm
- Medium withers and a flat croup with a shallow slope to the base of the tail

CURLY CHARACTERISTICS

- Body (Fine, soft hair)
- Ringlet (can be several inches long)
- Marcel Wave (deep soft wave in the body coat)
- Crushed Velvet (soft dense pile of curls in body coat)

MANE (EXTRA FINE HAIR)

- Kinky –preferable
- Wavy
- Should shed all or partial in the summer
- Split mane (hangs on both sides of neck)

TAIL

- Ringlets
- Wavy
- Should shed partial at the head of the tail in the summer of some horses may shed tail completely

FETLOCKS

- Curly –preferable
- Wavy
- Should shed in summer but still retain some long hairs

HOOVES

- Almost perfectly round in shape
- Very hard and dense
- Proportioned to the size of the horse

SIZE AND WEIGHT

- Average-15 hands
- Average weight-800 to 1000 pounds

UNIQUE CHARACTERISTICS

- Curly coat can be hypoallergenic (the horsehair is round instead of flat and testing has shown the hair is closely related to mohair)
- Can completely shed the mane and/or tail in the summer, only to grow back in the fall with the winter coat.
- Noticeably short, strong back, sometimes indicating five lumbar vertebrae
- Even-tempered disposition
- Quick pulse and respiration recovery
- Very dense bone in the legs



CURLY CUES

ABCR CURLY HORSE DATABASE

“FREE TO ABCR MEMBERS”

ABCR PROVIDES A FULLY LINKED ABCR CURLY HORSE STUDBOOK ONLINE WITH MORE THAN 8,100 ENTRIES AND 2,950 PICTURES INCLUDING ALL ABCR HORSES. THESE ARE THE FEATURES OF THIS DATABASE:

1. FULLY LINKED PEDIGREES WITH PICTURES
2. SIBLINGS VIEW: FIND FULL AND HALF SIBLINGS OF A GIVEN ABCR ANIMAL AT-A-GLANCE
3. OFFSPRING VIEW
4. VERTICAL PEDIGREES: VERTICAL PEDIGREES LIST FULL SIBLINGS OF EACH HORSE IN THE PEDIGREE AT-A-GLANCE, WHICH AS A GROUP REPRESENT VARIOUS COMBINATIONS OF THEIR PARENTS' GENES, AND ARE GOOD INDICATORS OF THE RANGE OF POSSIBILITIES THAT ARE LIKELY TO BE PASSED ON. USING VERTICAL PEDIGREE ANALYSIS GIVES BREEDERS INTERESTING INSIGHTS E.G. ABOUT CONFIRMATION OR THE EXTREME CHARACTERISTICS THAT CANNOT BE TRACKED IN A DIRECT MANNER.
5. REVERSE PEDIGREES: REVERSE PEDIGREES SHOW OFFSPRING OF THE OFFSPRING OF A GIVEN ANIMAL.
6. TRIAL MATING: TRY OUT MATING'S BETWEEN ABCR HORSES AND LOOK HOW THE CONFIRMATION OR OTHER CHARACTERISTICS WOULD MATCH.
7. ADDITIONAL INFORMATION SUCH AS COEFFICIENT OF INBREEDING (COI) AND PEDIGREE QUALITY
8. INDICATION OF DNA AVAILABILITY AND EXTREME CHARACTERISTICS
9. NAME GENERATOR: GENERATOR FOR HORSE NAMES BASED ON MORE THAN 40 YEARS OF ABCR CURLY HORSE NAMES-ALWAYS NEW AND FANCY COMBINATIONS, FUN GUARANTEED!
10. ADDITIONAL FEATURES: ADVANCED SEARCH, FULLY SCALABLE BETWEEN 3 AND 8 GENERATIONS, SAME ANCESTORS HIGHLIGHTED, ENLARGEABLE PICTURES

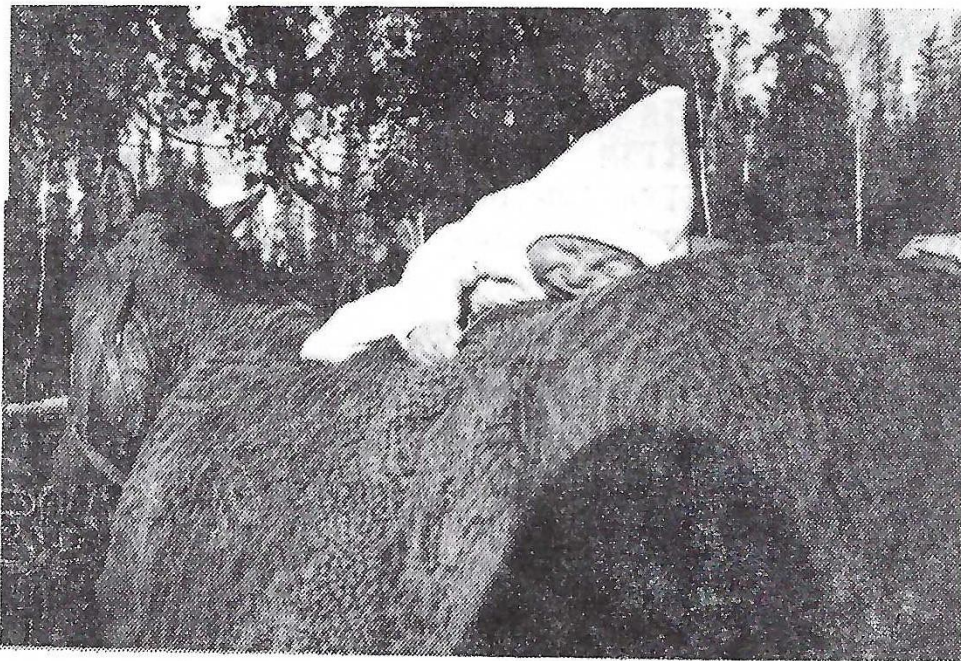


CURLY CUES

SENTIMENTAL JOURNEY

YOU CAN'T START 'EM YOUNGER THAN THIS --

On the day he was born, 9-3-83, baby Hillis Mead was given his very own Curly, GOLD STREAK SUNNY ABC-195. He was already a member of ABC! Guess he just couldn't wait to ride his yearling filly, as here he is -- four days old -- enjoying his first ride on her. Also, this was the very first time the filly had ever had a halter on, a true test of our Curlies' calm disposition. Now a "yearling" himself, Hillis loves to ride on his folks' gelding Q-CARD ABC-35, and doesn't like to be taken off! Curlies are great horses for kids!





CURLY CUES

NUTRITIONAL NEEDS OF THE PREGNANT MARE

DURING THE FIRST SEVEN OR EIGHT MONTHS OF GESTATION, THE FETUS GROWS VERY SLOWLY (APPROXIMATELY 0.2 LBS PER DAY) SO EARLY PREGNANCY DOES NOT PRESENT MUCH OF A NUTRITIONAL CHALLENGE TO THE MARE. DRY MARES IN EARLY GESTATION CAN BASICALLY BE FED LIKE ANY OTHER MATURE, IDLE HORSE. GOOD QUALITY PASTURE OR HAY ALONG WITH A SUPPLEMENT SUCH AS PURINA® FREE BALANCE 12:12 VITAMIN/MINERAL SUPPLEMENT OR ENRICH PLUS® RATION BALANCING HORSE FEED MAY BE ALL THAT IS NECESSARY TO MEET THESE MARES' NUTRITIONAL REQUIREMENTS.

HOWEVER, DURING THE LAST THREE – FOUR MONTHS OF PREGNANCY, THE UNBORN FOAL BEGINS TO GROW AND DEVELOP MORE RAPIDLY. DURING THE LAST 90 DAYS OF PREGNANCY, THE FETUS GAINS APPROXIMATELY 1 LB PER DAY. THIS HAS A SIGNIFICANT IMPACT ON THE MARE'S NUTRITIONAL REQUIREMENTS FOR PROTEIN, VITAMINS AND MINERALS. THE INCREASED SIZE OF THE FETUS ALSO TAKES UP MORE ROOM IN THE MARE'S BODY CAVITY, RESULTING IN THE MARE EATING LESS HAY OR FORAGE. THIS REDUCTION IN FORAGE INTAKE, COUPLED WITH THE INCREASED NUTRITIONAL DEMANDS OF THE PREGNANCY, LEADS TO A NEED FOR MARES TO BE SUPPLEMENTED WITH A NUTRITIONALLY BALANCED CONCENTRATED GRAIN MIX TO MEET TOTAL NUTRIENT REQUIREMENTS. EVEN IN SITUATIONS WHERE FORAGE ALONE IS MAINTAINING MARES IN ACCEPTABLE BODY CONDITION, IT IS IMPORTANT THAT THEY RECEIVE QUALITY CONCENTRATE SUPPLEMENTATION. WHILE GOOD QUALITY FORAGE MAY BE ABLE TO PROVIDE SUFFICIENT CALORIES TO MAINTAIN BODY CONDITION OF THE MARE, OTHER NUTRIENTS SUCH AS PROTEIN, VITAMINS AND MINERALS, WILL BE DEFICIENT.

JUST BECAUSE A MARE IS IN GOOD BODY CONDITION AND CARRYING ADEQUATE BODY FAT DOES NOT GUARANTEE PROPER FOAL DEVELOPMENT. RESEARCH HAS SHOWN THAT FOAL BIRTH WEIGHT CAN BE NEGATIVELY AFFECTED WHEN MARES ARE NOT FED ADEQUATE PROTEIN DURING LATE GESTATION, EVEN WHEN THE MARES ARE MAINTAINED IN A FLESHY CONDITION. IT IS NOT UNCOMMON TO SEE FAT MARES HAVE SMALL, WEAK FOALS WHEN THE MARES' DIETS ARE ADEQUATE IN CALORIES BUT LOW IN QUALITY



CURLY CUES

PROTEIN SOURCES. EVEN WHEN MARES ARE FED HIGH PROTEIN FORAGE, SUCH AS ALFALFA, THE DIET CAN BE DEFICIENT IN IMPORTANT AMINO ACIDS. RESEARCH HAS SHOWN THAT EVEN HIGH QUALITY ALFALFA IS NOT WELL DIGESTED IN THE HORSE'S UPPER GUT, THUS SOME OF THE ESSENTIAL AMINO ACIDS ARE NOT AVAILABLE TO THE ANIMAL TO MEET REQUIREMENTS. MARES IN LATE GESTATION SHOULD BE FED A GRAIN MIX OR SUPPLEMENT CONTAINING QUALITY PROTEIN SOURCES THAT WILL HELP MEET AMINO ACID REQUIREMENTS FOR OPTIMAL FOAL DEVELOPMENT. PURINA® OMOLENE #200®, STRATEGY® GX OR ULTIUM® GROWTH HORSE FEED WOULD BE GOOD CHOICES, OR PURINA® ENRICH PLUS® RATION BALANCING HORSE FEED MAY BE AN OPTION FOR MARES THAT ARE EASY KEEPERS.

DURING THE TENTH MONTH OF GESTATION THE GREATEST AMOUNT OF MINERAL RETENTION OCCURS IN THE UNBORN FOAL. MARE'S MILK IS PRACTICALLY DEVOID OF TRACE MINERALS THAT ARE ESSENTIAL FOR PROPER BONE DEVELOPMENT, SUCH AS COPPER. THEREFORE, ADEQUATE TRACE MINERAL SUPPLEMENTATION OF THE MARE IS CRITICAL FOR NORMAL FETAL DEVELOPMENT AND PROVIDES SUFFICIENT MINERALS FOR THE DEVELOPING FOAL TO STORE IN ITS BODY TO UTILIZE IMMEDIATELY AFTER BIRTH. IN THE FIRST WEEKS OF LIFE, FOALS WILL NOT EAT SUFFICIENT AMOUNTS OF FORTIFIED FEEDS AND MAY NOT HAVE ADEQUATE ABSORPTION OF DIETARY TRACE MINERAL SOURCES AT THIS EARLY STAGE OF DEVELOPMENT. PROPER MINERAL NUTRITION OF THE MARE IN LATE GESTATION HELPS ENSURE THAT THE FOAL RECEIVES AN ADEQUATE SUPPLY OF THESE IMPORTANT NUTRIENTS TO USE DURING VERY EARLY GROWTH STAGES. PASTURES AND HAYS ARE USUALLY QUITE DEFICIENT IN TRACE MINERALS SUCH AS COPPER AND ZINC, SO SUFFICIENT MINERAL SUPPLEMENTATION IN THE MARE'S TOTAL DIET IS CRITICAL. ALL OF THE AFOREMENTIONED PURINA PREMIUM FEEDS ARE DESIGNED TO PROVIDE ADEQUATE MINERALS TO MEET THE NEEDS OF THE MARE AND UNBORN FOAL, WHEN FED AS RECOMMENDED.

IF A MARE IS THIN DURING LATE GESTATION, MEANING THAT HER RIBS CAN BE SEEN, IT IS IMPORTANT TO FEED ENOUGH CALORIES SO THAT SHE GAINS WEIGHT, ESPECIALLY IF SHE IS TO BE BRED AGAIN. IT IS VERY DIFFICULT TO PUT WEIGHT ON A LACTATING MARE, AND THINNER MARES, ESPECIALLY THOSE NURSING A FOAL, ARE



CURLY CUES

LESS LIKELY TO GET BACK IN FOAL. PLUS, LACTATING MARES NEED A GREAT DEAL OF ENERGY TO SUPPORT OPTIMAL MILK PRODUCTION. THIS MEANS THAT LATE GESTATION IS THE LAST GOOD OPPORTUNITY TO GET A THIN MARE IN GOOD SHAPE FOR SUPPLYING MILK FOR THE SUCKLING FOAL, AS WELL AS PREPARING FOR THE NEXT BREEDING SEASON. IN THESE SITUATIONS, SELECT A FEED THAT IS CALORIE AND NUTRIENT DENSE, SUCH AS PURINA® OMOLENE #200®, STRATEGY® GX OR ULTIUM® GROWTH HORSE FEED, IN ORDER TO SUPPLY THE NEEDED ENERGY AND NUTRIENTS TO SUPPORT WEIGHT GAIN WITHOUT HAVING TO FEED EXCESSIVE AMOUNTS OF GRAIN.

WHILE RESEARCH FOUND THAT FAT MARES HAD A HIGHER INCIDENCE OF FOALING DIFFICULTIES THAN THINNER MARES, OBESE MARES DID HAVE A REDUCTION IN MILK PRODUCTION. IF A MARE IS SIGNIFICANTLY OVERWEIGHT DURING LATE GESTATION, WHERE RIBS CANNOT BE SEEN AND ARE DIFFICULT TO FEEL, IT IS IMPORTANT TO PROVIDE ADEQUATE PROTEIN, VITAMINS AND MINERALS TO SUPPORT OPTIMAL FETAL DEVELOPMENT WITHOUT ADDING UNNECESSARY CALORIES. IN THESE CASES, CHOOSE A CONCENTRATED PROTEIN, VITAMIN, MINERAL SUPPLEMENT THAT IS DESIGNED TO BE FED AT ONE – TWO POUNDS PER DAY, SUCH AS PURINA® ENRICH PLUS® RATION BALANCING HORSE FEED. THIS TYPE OF SUPPLEMENT WILL MEET THE NUTRIENT NEEDS OF THE UNBORN FOAL WITHOUT CAUSING WEIGHT GAIN IN THE MARE. IT MAY BE NECESSARY TO RESTRICT HAY INTAKE TO 1.5% OF THE MARE'S BODY WEIGHT IF SHE IS SIGNIFICANTLY OVERWEIGHT.

PROPER NUTRITIONAL MANAGEMENT OF THE BROODMARE DURING LATE GESTATION WILL GIVE HER FOAL THE BEST START IN LIFE. WITH ALL THE TIME AND MONEY INVESTED IN GETTING A FOAL ON THE GROUND, YOU DON'T WANT TO SKIMP ON MARE NUTRITION DURING THIS CRITICAL TIME.



CURLY CUES

BREEDERS

DISTRICT 1

#338 JOAN OLSON
HIGH DESERT EQUINE CENTER
5555 Wilcox Ranch Road
Reno, NV 89510
PH: 775-475-2250
E-Mail: ilovecurlies@hotmail.com
Website: www.hdequine.com
Stallions: WW Peter Lakota ABC#3638
Maximun Pride ABC#3650
Stag Creek Solen ABC#4075

DISTRICT 2

#131 TAMEA DENAULT
DREAMSWEPT FARM
192A Jackknife Lookout Rd.
Kettle Falls, WA 99141
PH: 253-884-5212
E-Mail: office@dreamsweptfarm.com
Website: www.dreamsweptfarm.com
Stallions: Copper's Rainmaker ABC#2737
DSF Mochacheno ABC# PB648

#421 JEFF & GAIL PARKER
2080 Sunset Blvd.
Bar Nunn, WY 82601
PH: 307-254-5637
E-Mail: jcgparker@gmail.com
Stallion:
HD Pride's Romeo Got Curl ABC# O54

DISTRICT 3

BRANDON 7 JENNIFER BENNETT
CURLY PINES RANCH
147 Rocky Lane
Bastrop, TX 78602
PH: 512-965-7543
E-Mail:
sunflowertrails@curlypinesranch.com
Website:
www.curlypinesranch.com
Stallion:
SFT True Heart ABC#3644

DISTRICT 4

#400 LYNDESEY DUBBELDE
HEARTLAND COUNTRY CURLIES
25127 474th Ave.
Baltic, SD 57033
Website:
www.heartlandcountrycurlies.com

DISTRICT 5

#407 PAUL DENNIS
42949 TIMBER HILLS LANE
Boscobel, WI 53805
PH: 608-872-236
E-Mail: devacurly@gmail.com

#181 MARV WOODKE
WOODKE'S WALNUT WOODS
466 E. 550 N. Monterey< IN 46960
PH: 574-542-2457
E-Mail: marvwoodke@gmail.com
Stallions:
SLL Sr Patrick's Lil Chip ABC#3366
MVR Eclipse ABC#3358



CURLY CUES

BREEDERS

DISTRICT 6

#79 TOM & BRENDA McNALLY

HARDSCABBLE FARMS

7 Town Shed RD.

Minerva, NY 12851-9713

PH: 518-251-9713

E-Mail: curlynut@frontiernet.net

Curlyhorselady67@yahoo.com

rbylab@barton.com

Stallions: THUNDER ROAD, ABC# 2800

WW QUARTER MOON, ABC# 245

DISTRICT 7

#62 MELINDA MARTINO

ROCKY RIDGE FARM

2347 Hempfling Rd.

Morning View, KY 41063

E-Mail: melscurlyhorses@aol.com

PH: 859-356-0749

Cell: 859-250-4364

#298 SHAWN & LOUIS TUCKER

THREE FEATHERS NATIVE CURLY HORSES

Lawrenceburg, KY 40342

PH: 502-839-3978

E-Mail: threefeathers@earthlink.com

Website: <http://www.three-feathers.com>

Stallion: TFN NAGIHANHEPI WI TO, ABC# 3954



CURLY CUES

BREEDERS

DISTRICT 8

#18 SONJA/GREG OAKES

OAKESMUIR CURLY HORSES

RR#5

Guelph, ONT, CANADA H1H 6J2

PH: 519-822-1211

FAX: 519-846-5554

Website: <http://www.curlyhorse.com>

Stallion: OAKESMUIR DUKE OF CURL, ABC# 2818

#166 KARALEE BELL

WHIRLWIND FARM

437 County Road 12, RR#2

Lunenburg, Ontario, Canada K0C 1R0

PH: 613-346-5790

E-Mail: bellkr@bell.net

Website: <http://www.whirlwindcurlies.com>

Stallions: JC'S JOKER, ABC# 512

DCC SANTA FE, ABC# 2895

#358 DEAN TAVANETZ

TAVANETZ RANCH

PO Box 1418 Biggar, SK, CANADA, S0K 0M0

PH: 306-948-2963

E-Mail: rdtavanetz@sasktel.net

#316 FLORENCE MARTIN

Flora Lake Curly Horses

5362 King St. Nithburg

RR#2 Wellesley, ONT, Canada N0B 2T0

PH: 519-656-0098

E-Mail: floralake@mwpol.ca

Website: www.floralakecurlyhorses.com

Stallions: Mead's Aishihik Twist ABC#3426

TO Shadow's Black Diamond ABC# 3641



CURLY CUES

BREEDERS

DISTRICT 9

#192 DANIELA SOEHNCHEN

CURLY HORSES GERMANY

Poshof 2, 51688 Wipperfürth, GERMANY

PH: 011-49-(0) 2267-888 7510

Cell: 011-49-178-7646243

E-Mail: curly-info@t-online.de

Website: <http://www.curlyhorsesgermany.de/>

Stallions: CHG SPARTA GENTLEMAN, ABC 3912

FLORALAKE AISHIHIK'S ONYX, ABC 3921

Schwabstr 4

#279 RATULOAN KOTI OY

LAPIN CURLY TALLI

Vuoniksenvaarantia 51

Raattama, Kittila, 99340 FINLAND

E-Mail: armi@lapincurlytalli.fi

bertta@lapincurlytalli.fi

Website: <http://lapincurlytalli.fi/>

Stallions: TROY, ABC 3214

SUN WALKER, ABC 2934

#302 NICOLE SCHOEN

CURLY HORSES NIEDERSACHSEN

Breite Str. 24 29221 Celle

E-Mail: info@curly-horses-niedersachsen.de

Website: <http://www.curly-horse-niedersachsenhamburg.de>

#412 MARI WECKMAN JAPPILANTIE 271

Suonenjoki 77600, Finkand

Email: mari.weckman@gmail.com

#418 NINA SALONEN

WINSOME CURLIES

Pyppamaentie 73

Muuramie, Finland

E-Mail: winsomecurlies@gmail.com

#393 VERONIKA SCHMID

CURLY STAR

Bern, CH 3018

Switzerland

E-Mail: schmid1@bluewin.ch

Website: www.curlystar.ch

Stallions: Stag Creek Mecate

CurlyStar Sioux's Charly S788

#416 MARION DUEHRIG

Gscheidbuhl 2

Viechtach, Germany 94234

#419 MEIKE MEUSER-KLERSY

Engelshohl 6a

65606 Villmar, Germany

meike.meuser-klersy@web.de

#420 ANTJE AVRAM

Zecherin 38

17406 Usedom, Germany

fritz-antje67@web.de



CURLY CUES

BOARD MEMBERS

PRESIDENT

Joan Olson
1560 Manzanita Lane Reno, NV 89509
PH: 920-255-0326

jo_curlies@hotmail.com

VICE-PRESIDENT

ANGIE GAINES
7480 CR 4095
Kaufman, TX 75142
PH: 214-794-1776

angie@goldencurlranch.com

SECRETARY

Donna Laroux /At Large Trustee
247 Poplar St.
Zwolle, LA 71486
PH: 219-241-3519

dlaroux@aol.com

Sue Davis/At Large Trustee
5555 Wilcox Ranch Rd Reno, NV 89510
PH: 618-670-4963

ilovecurlies@hotmail.com

TREASURER

Melinda Martino 2347 Hempfling Rd.
Morning View, KY 41063
PH: 859-356-0749

melscurlyhorses@aol.com

REGISTRAR

Melinda Martino
2347 Hempfling Rd. Morning View, KY 41063
PH: 859-356-0749

melscurlyhorses@aol.com

DIST. 1: CA, NV, HI, UT, AZ

Joan Olson
1560 Manzanita Lane Reno, NV 89509
PH: 775-826-7580 Cell: 920-255-0327

jo_curlies@hotmail.com

DIST. 2: WA, OR, ID, MT, WY, CO

Diane Mitchell
2677 CR 112
Caldwell, TX 77836
PH: 979-535-4426

diane@curlycountry.com

DIST. 3: NM, TX, AR, LA, OK

Diane Mitchell
2677 CR 112
Caldwell, TX 77836

diane@curlycountry.com

DIST.4: ND, SD, NE, KS, MN, IA, MO

Angie Gaines/At Large Trustee
7480 CR 4095
Kaufman, TX 75142
PH: 214-794-1776

angie@goldencurlranch.com

DIST. 5: WI, MI, IL, IN, OH

Shawn Tucker
859-489-9105

curls@threefeathers.com

DIST.6: CT, DE, ME, MD, MA, NH, NJ, NY, PA, RI, VT

Marion Hurman-de-Roos
877 Thrasher Rd
Burkesville, KY 42717
PH: 270-433-3225

marion@hiddencaveranch.com

DIST.7: AL, FL, GA, KY, MS, NC, SC, TN, VA, WV

Melinda Martino
2347 Hempfling Rd
Morning View, KY 41063
PH: 859-356-0749
melscurlyhorses@aol.com

DISTRICT 8: AK, CANADA

DISTR. 9: EUROPE, AUSTRALIA, REMAINING COUNTRIES

Marion Hurman-de-Roos
877 Thrasher Rd.,Burkesville, KY 42717
PH: 270-433-3225, Email: marion@hiddencaveranch.com

ISSUE 23 FALL 2020

WWW.ABCREGISTRY.ORG

15